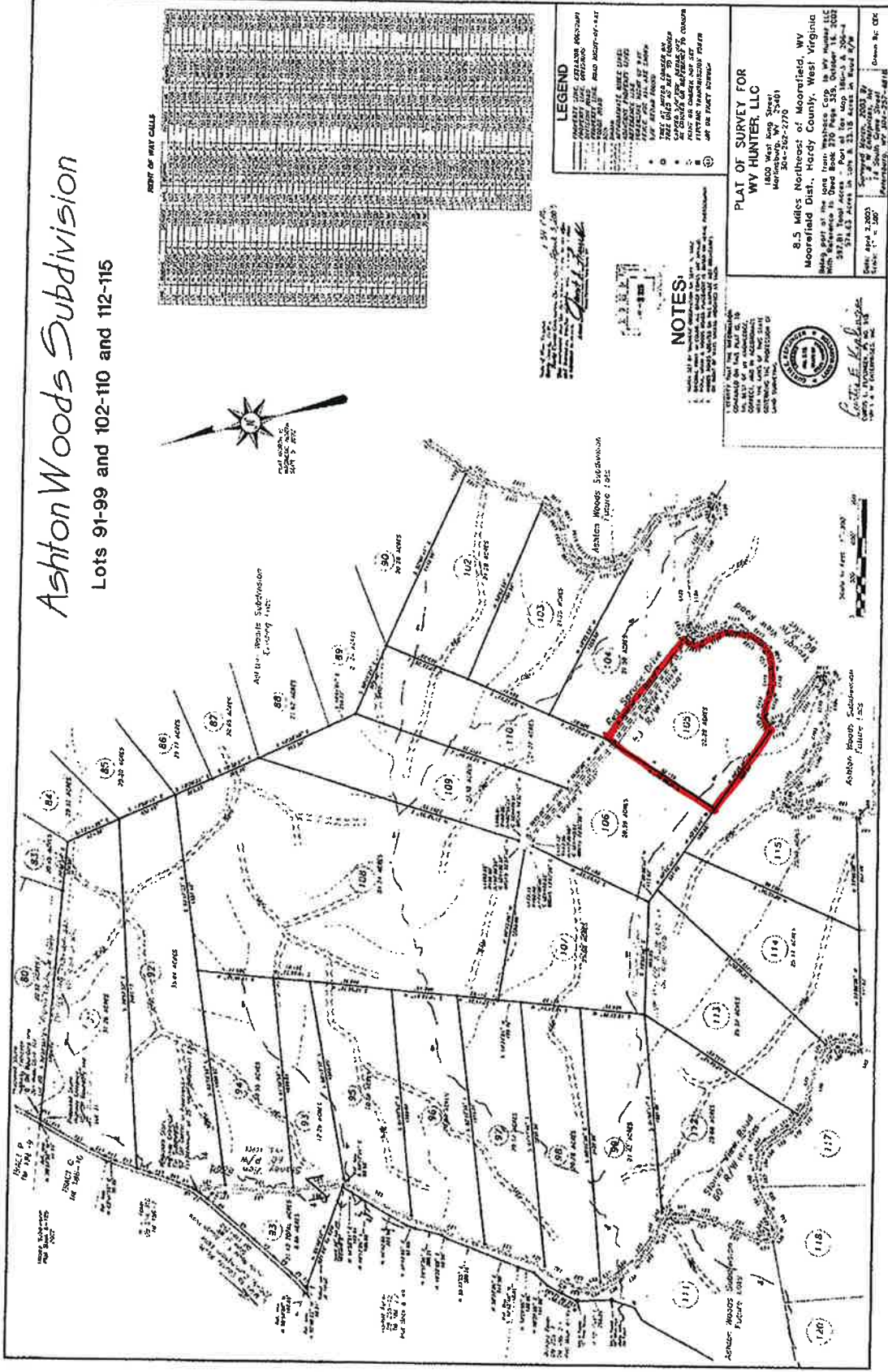
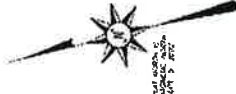


Ashton Woods Subdivision

Lots 91-99 and 102-110 and 112-115



LIST OF LOT CALLS

80	1.42 ACRES
81	1.42 ACRES
82	1.42 ACRES
83	1.42 ACRES
84	1.42 ACRES
85	1.42 ACRES
86	1.42 ACRES
87	1.42 ACRES
88	1.42 ACRES
89	1.42 ACRES
90	1.42 ACRES
91	1.42 ACRES
92	1.42 ACRES
93	1.42 ACRES
94	1.42 ACRES
95	1.42 ACRES
96	1.42 ACRES
97	1.42 ACRES
98	1.42 ACRES
99	1.42 ACRES
100	1.42 ACRES
101	1.42 ACRES
102	1.42 ACRES
103	1.42 ACRES
104	1.42 ACRES
105	1.42 ACRES
106	1.42 ACRES
107	1.42 ACRES
108	1.42 ACRES
109	1.42 ACRES
110	1.42 ACRES
111	1.42 ACRES
112	1.42 ACRES
113	1.42 ACRES
114	1.42 ACRES
115	1.42 ACRES
116	1.42 ACRES
117	1.42 ACRES
118	1.42 ACRES
119	1.42 ACRES
120	1.42 ACRES

LEGEND

- SUBDIVISION BOUNDARIES
- PROPERTY BOUNDARIES
- EXISTING EASEMENTS
- EXISTING UTILITIES
- EXISTING ROADS
- EXISTING LOT LINES
- EXISTING RIGHT-OF-WAY
- EXISTING ZONING
- EXISTING SETBACKS
- EXISTING UTILITIES
- EXISTING RIGHT-OF-WAY
- EXISTING ZONING
- EXISTING SETBACKS

PLAT OF SURVEY FOR
WY HUNTER, LLC
 1800 West King Street
 Moorefield, West Virginia
 Subdivision #2725

8.5 Miles Northeast of Moorefield, WV
 Moorefield Dist., Hardy County, West Virginia

Being part of the lots from: *Wetness Co. vs. W. Va. Nat. Gas*
 with Reference to Deed Book 370 Page 358, October 16, 2007
 3714.33 Acres, and Deed Book 371 Page 358, October 16, 2007
 3714.33 Acres, and Deed Book 371 Page 358, October 16, 2007
 3714.33 Acres, and Deed Book 371 Page 358, October 16, 2007

Surveyed March, 2003 by
 J. P. [Name], Surveyor, No. [Number]
 [Address], [City], [State]

NOTES:

1. ALL DISTANCES ARE IN FEET AND DECIMALS THEREOF.
2. ALL ANGLE MEASUREMENTS ARE IN DEGREES AND MINUTES.
3. ALL CORNERS ARE TO BE BUILT AND MARKED.
4. ALL DISTANCES ARE TO BE MEASURED ALONG THE CENTERLINE OF THE ROAD.
5. ALL DISTANCES ARE TO BE MEASURED ALONG THE CENTERLINE OF THE ROAD.
6. ALL DISTANCES ARE TO BE MEASURED ALONG THE CENTERLINE OF THE ROAD.
7. ALL DISTANCES ARE TO BE MEASURED ALONG THE CENTERLINE OF THE ROAD.
8. ALL DISTANCES ARE TO BE MEASURED ALONG THE CENTERLINE OF THE ROAD.
9. ALL DISTANCES ARE TO BE MEASURED ALONG THE CENTERLINE OF THE ROAD.
10. ALL DISTANCES ARE TO BE MEASURED ALONG THE CENTERLINE OF THE ROAD.



John P. [Name]

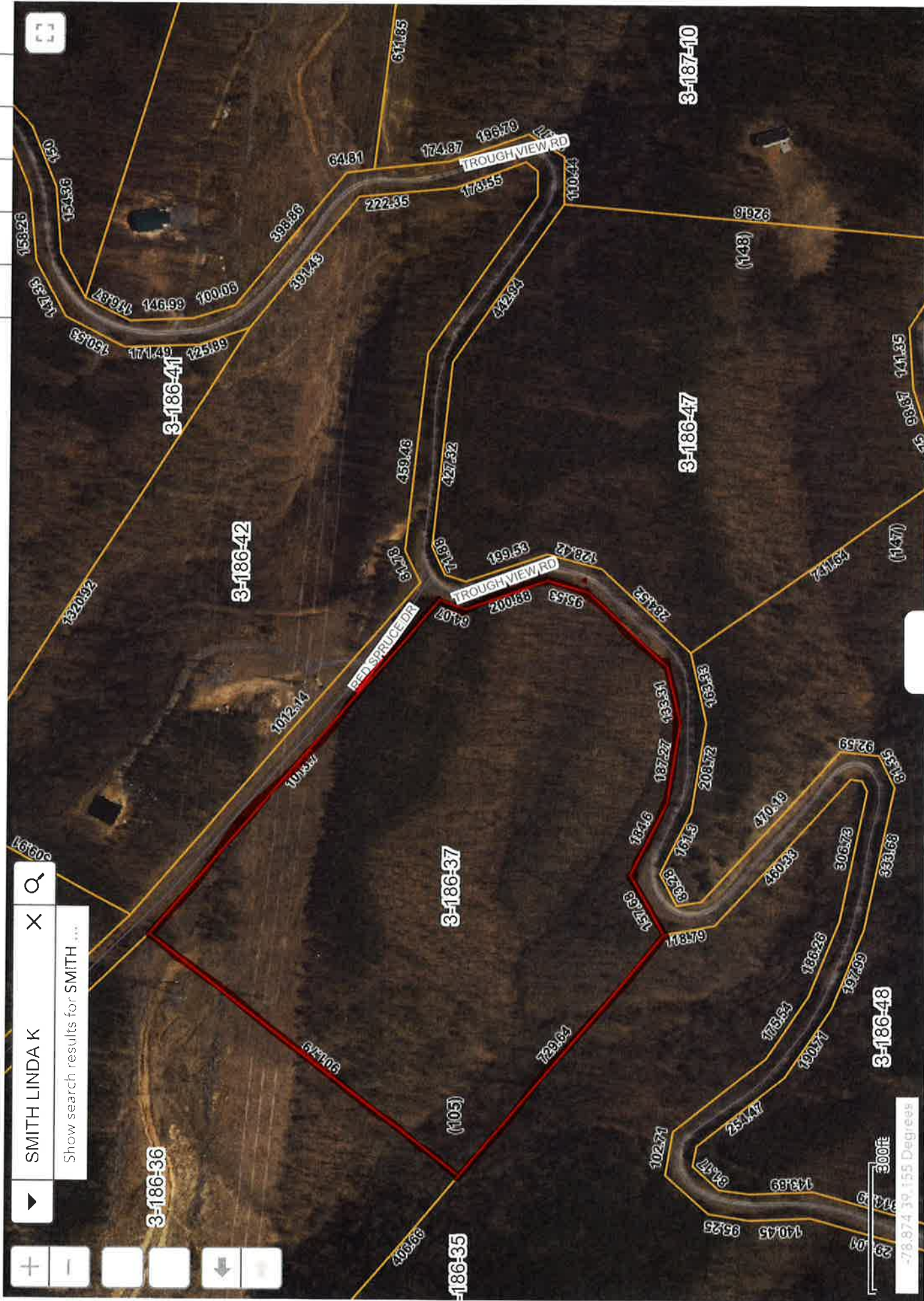
Hardy County Parcel Viewer

IAS Portal



SMITH LINDA K X

Show search results for SMITH ...



Hardy County Parcel Viewer

IAS Portal

+ - 6 ↕ ↕

▶ SMITH LINDA K X Q
 Show search results for SMITH ...

