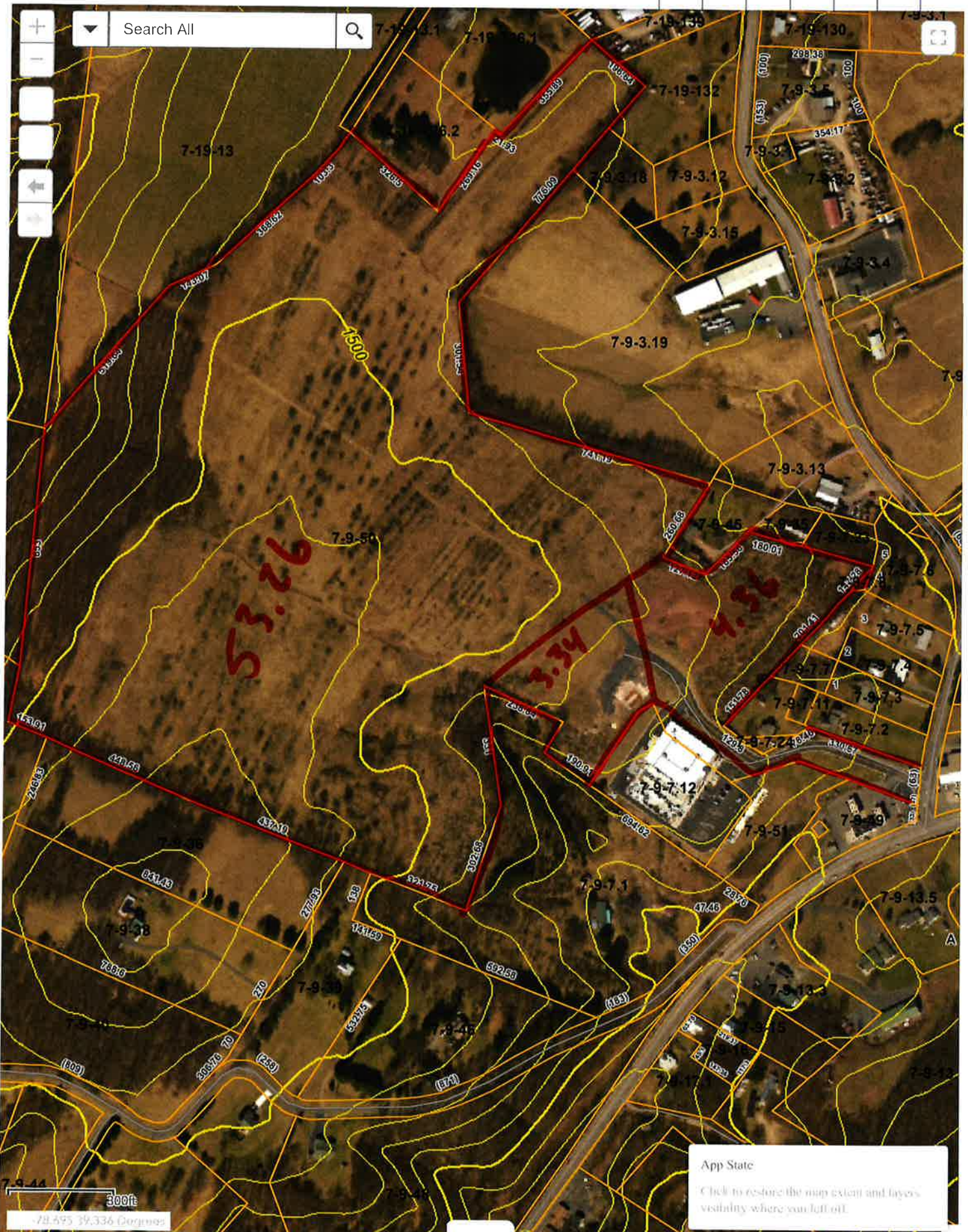


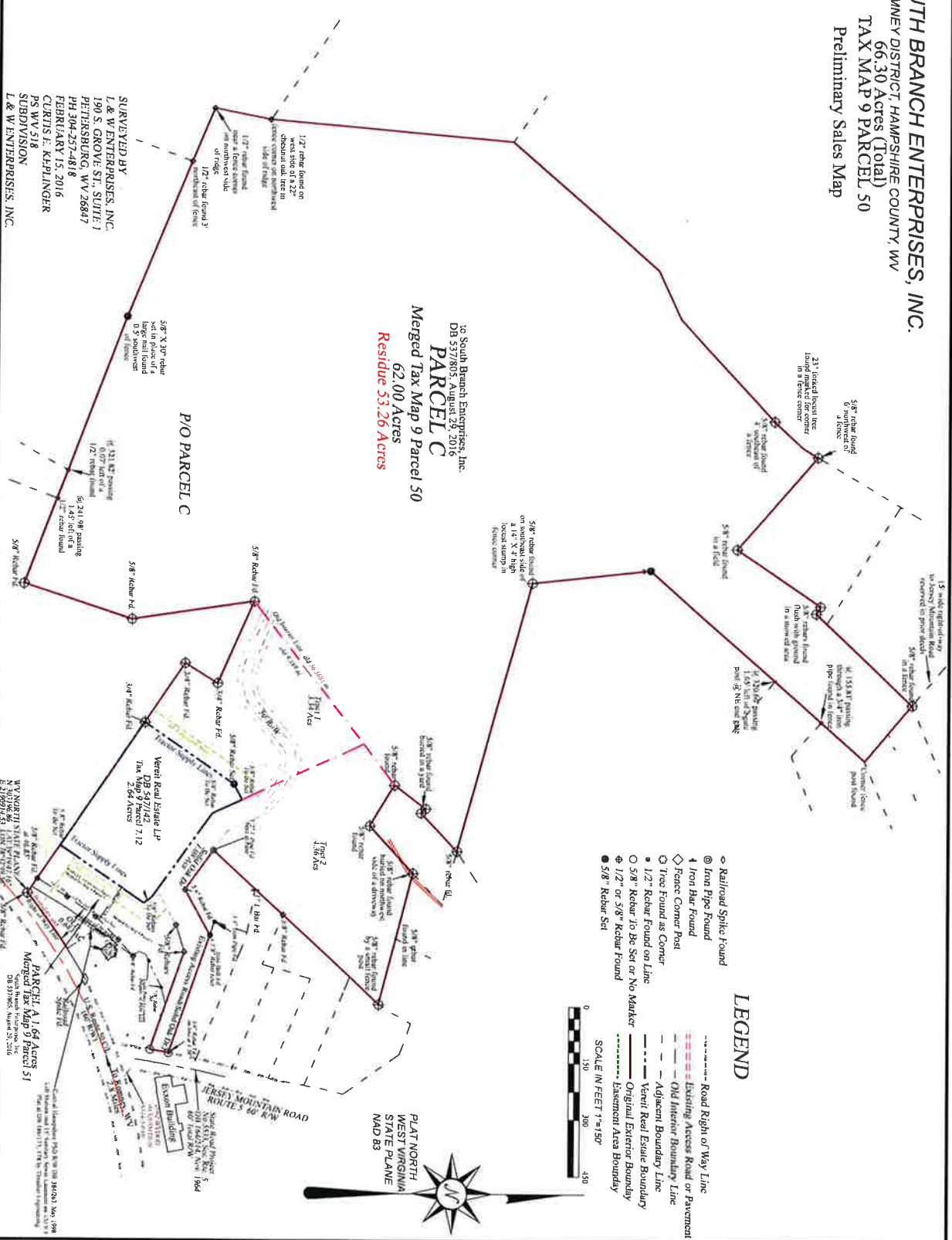
Hampshire Parcel Viewer



SOUTH BRANCH ENTERPRISES, INC.
 ROMNEY DISTRICT, HAMPSHIRE COUNTY, WV
66.30 Acres (Total)
TAX MAP 9 PARCEL 50
 Preliminary Sales Map

to South Branch Enterprises, Inc.
 DB 537/805, August 25, 2016
PARCEL C
 Merged Tax Map 9 Parcel 50
62.00 Acres
 Residue **53.26 Acres**

SURVEYED BY
 L & W ENTERPRISES, INC.
 190 S. GROVE ST., SUITE 1
 PETERSBURG, WV 26847
 PH 304-257-4818
 FEBRUARY 15, 2016
 CURTIS E. KEPLINGER
 PS WV 518
 SUBDIVISION
 L & W ENTERPRISES, INC.



LEGEND

- ◊ Railroad Spike Found
- ⊕ Iron Pipe Found
- ⚡ Iron Bar Found
- ◇ Fence Corner Post
- ⊙ Tree Found as Corner
- 1/2" Rebar Found on Line
- 5/8" Rebar 10 Be Set or No Marker
- ⊕ 1/2" or 5/8" Rebar Found
- 5/8" Rebar Set
- Road Right of Way Line
- Existing Access Road or Pavement
- Old Interior Boundary Line
- Adjoining Boundary Line
- Vested Real Estate Boundary
- Original Exterior Boundary
- Easement Area Boundary



PLAT NORTH
 WEST VIRGINIA
 STATE PLANE
 NAD 83

PARCEL A 1.64 Acres
 Merged Tax Map 9 Parcel 51
 DB 537/805, August 25, 2016

VEREIL REAL ESTATE LP
 Tax ID: DB 547/142, 7.12
 104 S. WORTHINGTON ST., WYOMING
 N 303288-86
 E 213999-23

ESSEX BUILDING
 200 1/2 W. MAIN ST., ROOM 100
 N 5533-300, E 1174
 W. 21ST STREET, WYOMING
 N 303288-86, E 213999-23