

11/197

Mo.

**REVISED FINAL PLAT OF
RIVERSIDE VILLAGE
LOT NOS. 1 THRU 15 & COMMON AREA
16.600 TOTAL ACRES
TOTAL AREA WITHIN NEW ROAD R/W: 0.551 ACRES
TOWN OF CAPON BRIDGE - BLOOMERY DISTRICT,
HAMPSHIRE COUNTY, WEST VIRGINIA**



WEST VIRGINIA SECONDARY ROUTE 15 (COLDSTREAM ROAD) THE CAPON BRIDGE DISTRICT, A 60-FOOT WIDE R/W

MARKING SHALL BE PLACED AT THE CORNERS OF THE LOTS AND AT THE INTERSECTIONS OF THE LOTS WITH THE ADJACENT ROADS.

CONCRETE CURB SHALL BE PLACED AT THE CORNERS OF THE LOTS AND AT THE INTERSECTIONS OF THE LOTS WITH THE ADJACENT ROADS.

THE AREA BEING MERGED TO THE COMMON AREA AS FOLLOWS:

- 1. 0.238 ACRES (LOT 16)
- 2. 0.238 ACRES (LOT 17)
- 3. 0.055 ACRES (LOT 18)
- 4. 0.055 ACRES (LOT 19)
- 5. 0.055 ACRES (LOT 20)
- 6. 0.055 ACRES (LOT 21)
- 7. 0.055 ACRES (LOT 22)
- 8. 0.055 ACRES (LOT 23)
- 9. 0.055 ACRES (LOT 24)
- 10. 0.055 ACRES (LOT 25)
- 11. 0.055 ACRES (LOT 26)
- 12. 0.055 ACRES (LOT 27)
- 13. 0.055 ACRES (LOT 28)
- 14. 0.055 ACRES (LOT 29)
- 15. 0.055 ACRES (LOT 30)

HEREBY, THE NEW AREA OF THE INDICATED LOTS AND THE COMMON AREA AS FOLLOWS:

- 1. 0.238 ACRES (LOT 16)
- 2. 0.238 ACRES (LOT 17)
- 3. 0.055 ACRES (LOT 18)
- 4. 0.055 ACRES (LOT 19)
- 5. 0.055 ACRES (LOT 20)
- 6. 0.055 ACRES (LOT 21)
- 7. 0.055 ACRES (LOT 22)
- 8. 0.055 ACRES (LOT 23)
- 9. 0.055 ACRES (LOT 24)
- 10. 0.055 ACRES (LOT 25)
- 11. 0.055 ACRES (LOT 26)
- 12. 0.055 ACRES (LOT 27)
- 13. 0.055 ACRES (LOT 28)
- 14. 0.055 ACRES (LOT 29)
- 15. 0.055 ACRES (LOT 30)

NOTE: THE TOTAL COMMON AREA INCLUDING RIVER ACCESS FOR LOTS IS 9.831 ACRES ORIGINALLY BUT THE REVISED AREA IS 10.170 ACRES AFTER SMALL MERGERS FROM LOT NOS. 11, 12, 13, 14 & 15. SEE NOTE A FOR MORE SPECIFIC INFORMATION (LOCATED ALMOST ENTIRELY WITHIN THE 100-YEAR FLOOD ZONE OR THE FLOODWAY) (NOTE: FOR MORE SPECIFIC INFORMATION REGARDING THE COMMON AREA PROTECTIVE COVENANTS AS RECORDED IN D.B. 459 AT PAGE 488.)

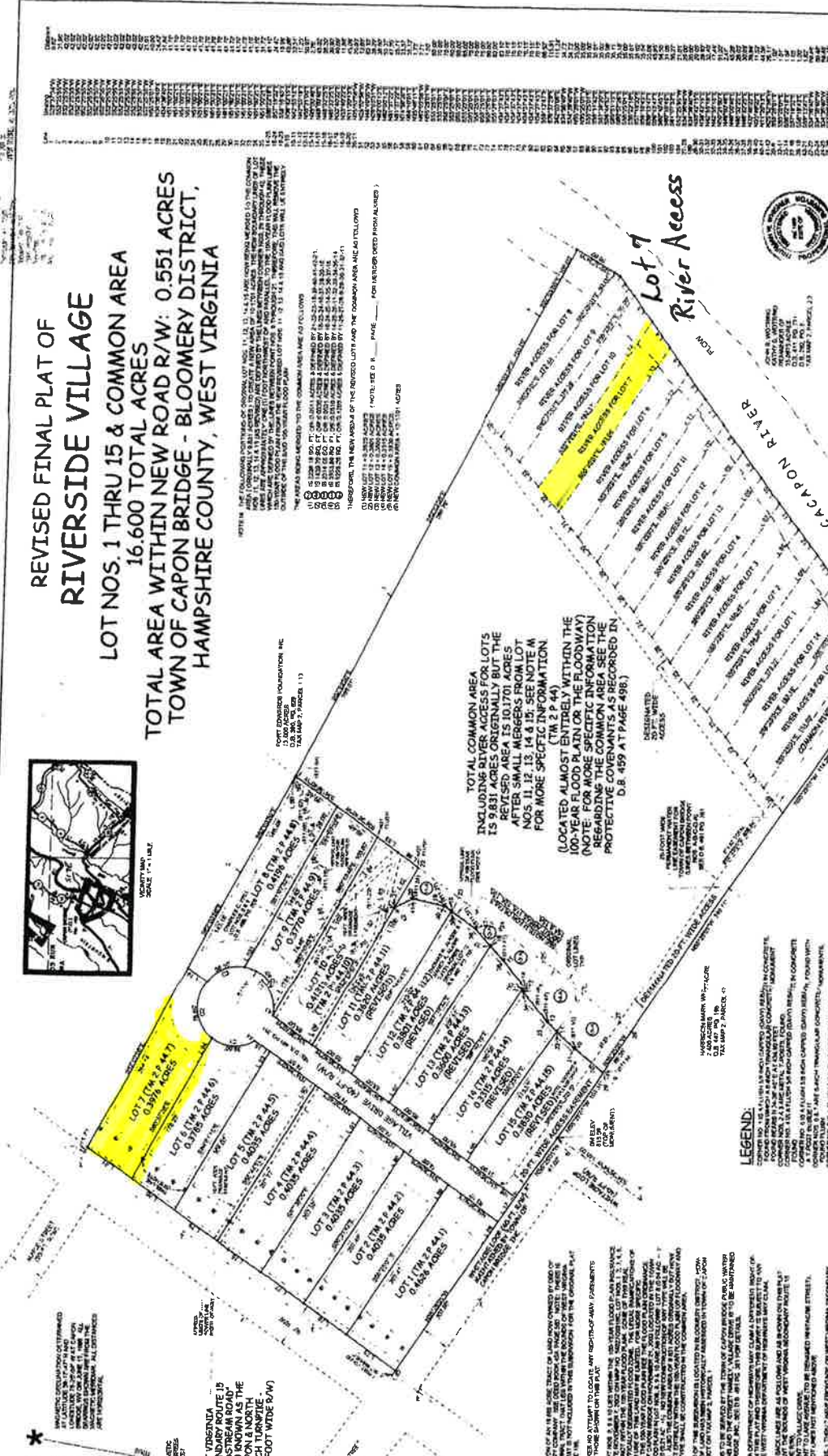
NOTES:
NOTE 1. THIS PLAT IS THE REVISED FINAL PLAT OF THE TOWN OF CAPON BRIDGE...
NOTE 2. THE COMMON AREA INCLUDING RIVER ACCESS FOR LOTS IS 9.831 ACRES...
NOTE 3. THE TOTAL COMMON AREA INCLUDING RIVER ACCESS FOR LOTS IS 10.170 ACRES...
NOTE 4. THE COMMON AREA INCLUDING RIVER ACCESS FOR LOTS IS 10.170 ACRES...
NOTE 5. THE COMMON AREA INCLUDING RIVER ACCESS FOR LOTS IS 10.170 ACRES...

LEGEND:
* UNIMPROVED LOT (CONCRETE CURB AND MARKING)
* UNIMPROVED LOT (CONCRETE CURB AND MARKING)
* UNIMPROVED LOT (CONCRETE CURB AND MARKING)

APPROVED BY THE:
PLANNING COMMISSION
DATE 11/13/197

FOR RECORDS, FINAL COPY OF REVISIONS TO BE SUBMITTED TO THE PLANNING COMMISSION AND THE TOWN OF CAPON BRIDGE.

R & S SERVICES, INC.
REGISTERED PROFESSIONAL ENGINEER
P.O. BOX 97 | JOHN RAVENHILL
WEST VIRGINIA



APPROVED BY THE PLANNING COMMISSION

DATE 11/13/197

FOR RECORDS, FINAL COPY OF REVISIONS TO BE SUBMITTED TO THE PLANNING COMMISSION AND THE TOWN OF CAPON BRIDGE.

R & S SERVICES, INC.
REGISTERED PROFESSIONAL ENGINEER
P.O. BOX 97 | JOHN RAVENHILL
WEST VIRGINIA

Hampshire Parcel Viewer



3-2-44.7



Show search results for 3-2-44.7



60ft

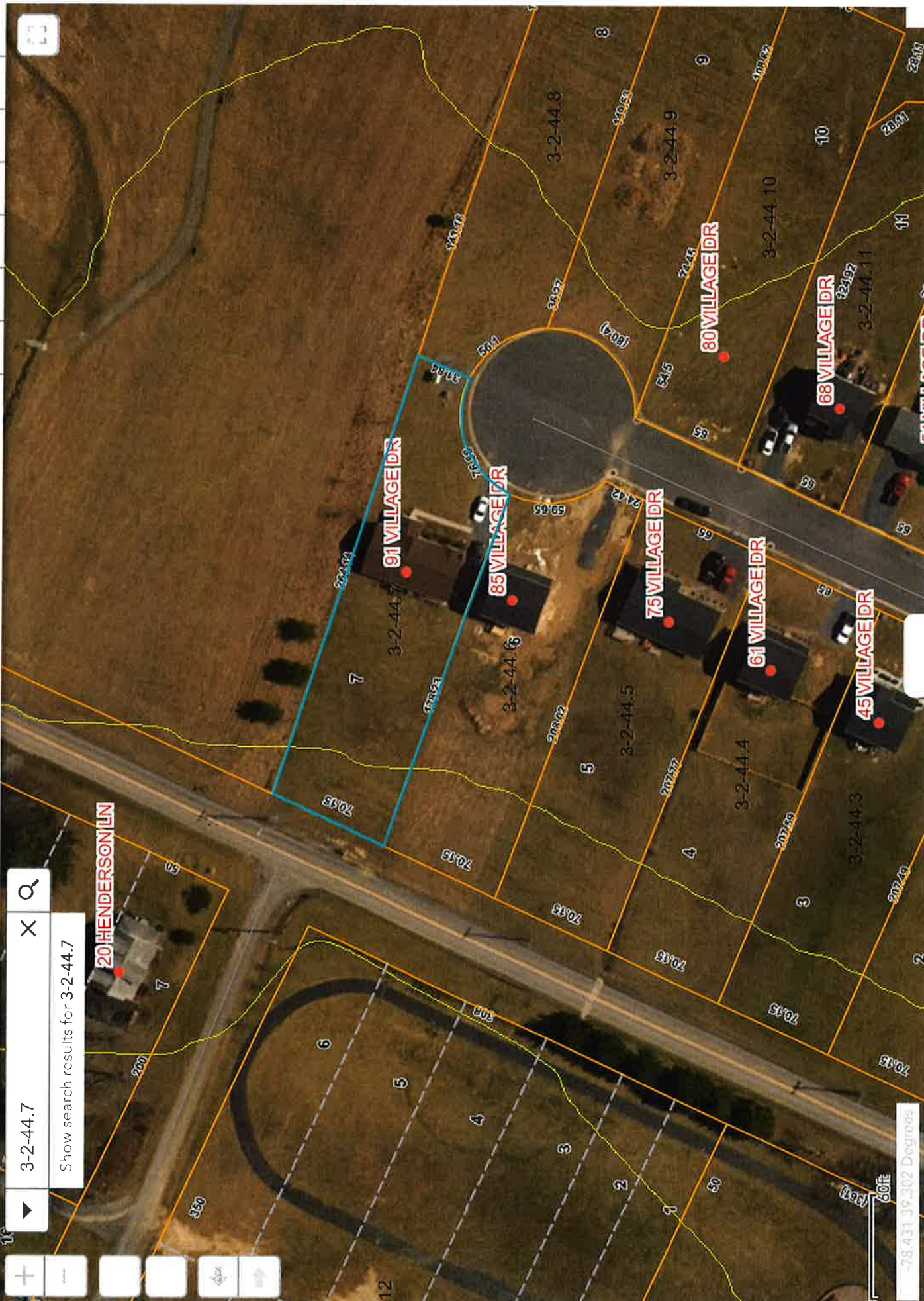
78.434 39.302 Degrees

Hampshire Parcel Viewer

3-2-44.7 X Q

Show search results for 3-2-44.7

20 HENDERSON LN



-78.431 39.302 Degrees

60ft

3-2-44.7

Show search results for 3-2-44.7

20 HENDERSON LN

100%

Hampshire Parcel Viewer



3-2-44.7 X Q

Show search results for 3-2-44.7

20 HENDERSON LN

91 VILLAGE DR

85 VILLAGE DR

75 VILLAGE DR

61 VILLAGE DR

45 VILLAGE DR

80 VILLAGE DR

68 VILLAGE DR



60ft
78.432 39.302 Degrees